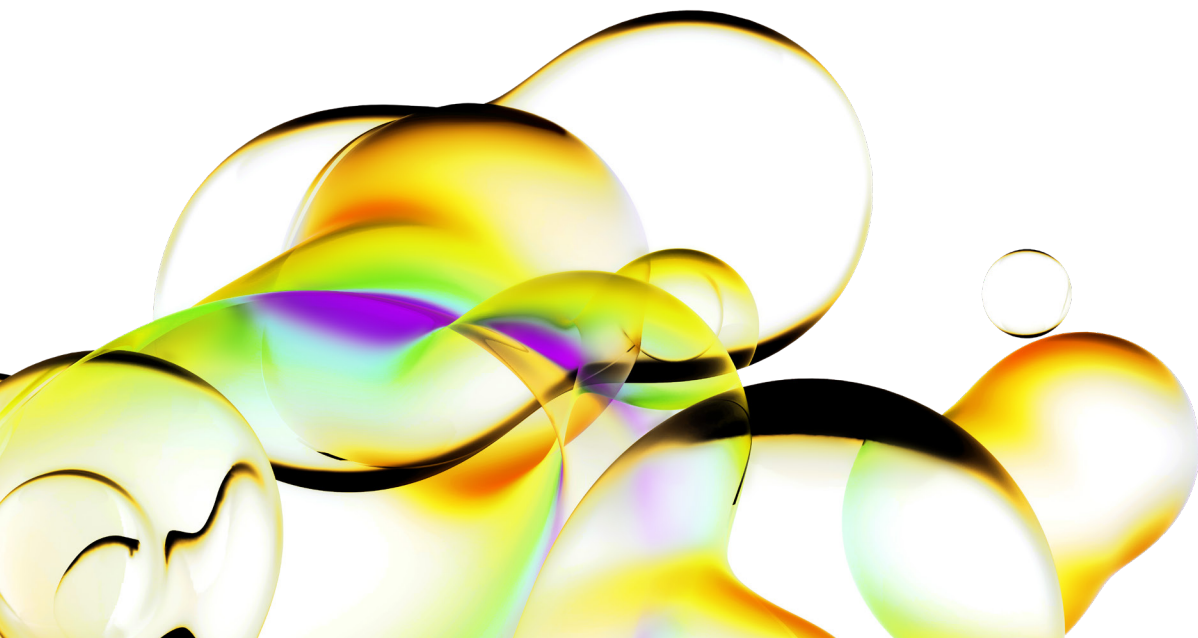




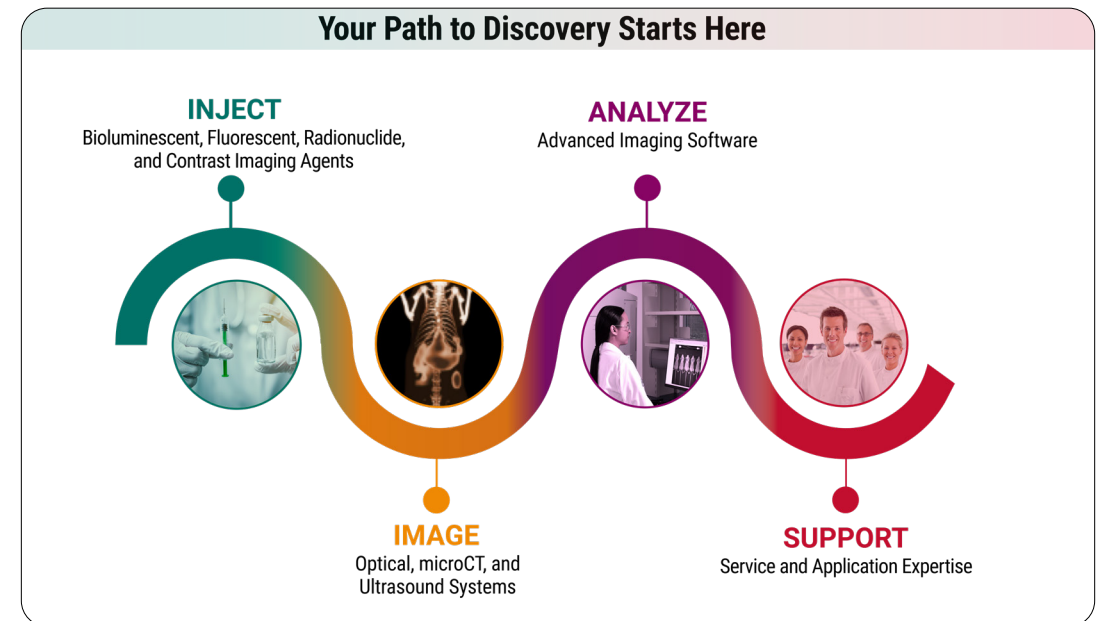
Visualize
everything biology
has to show you.



In vivo imaging solutions

Whether your research involves better understanding molecular pathways of disease, tracking disease progression, or evaluating therapeutic effectiveness of drug candidates, your cutting-edge research commands high-sensitivity and reliable *in vivo* imaging data.

Revvity is here to help you achieve your research goals with our leading molecular imaging platforms and diverse range of bioluminescent and fluorescent reagents. From single mode 2D optical and 3D tomography to multimode integrated systems, we have the tools you need to help you get the answers you are searching for to move your research forward.

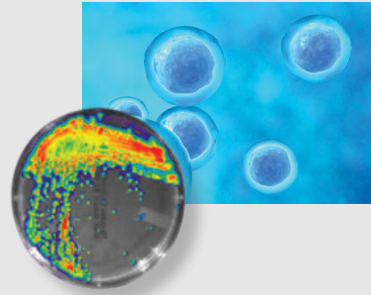


Reagents



**IVISbrite™
substrates**

- D-Luciferin potassium salt
- D-Luciferin in RediJect™ Solution
- D-Luciferin Ultra in RediJect™ Solution
- Coelenterazine h in RediJect™ Solution



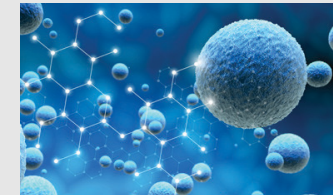
**IVISbrite™
cells and bacteria**

- Tumor cell lines with enhanced Red-Fluc vector
- Dual optical tumor cell lines with Red-Fluc and Green Fluorescent Protein (GFP)
- Lentiviral particles
- Bacterial strains labeled with lux operon gene



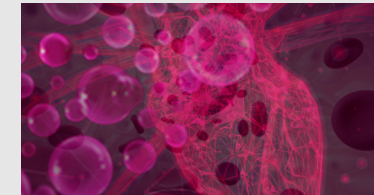
**IVISense™
fluorescent probes****

- Broad range of fluorescent probes for imaging biological targets, processes, and protease activity
 - Activatable
 - Targeted
 - Vascular
- Fluorescent panels prepackaged and targeted for your research



**IVISense™ fluorescent
labels and nanoparticles***

- Dyes and labels
- Nanoparticles






**VesselVue® Microbubble
Contrast Agent**

- P-Formulation (polydisperse)

+ Volume discount on selected reagents

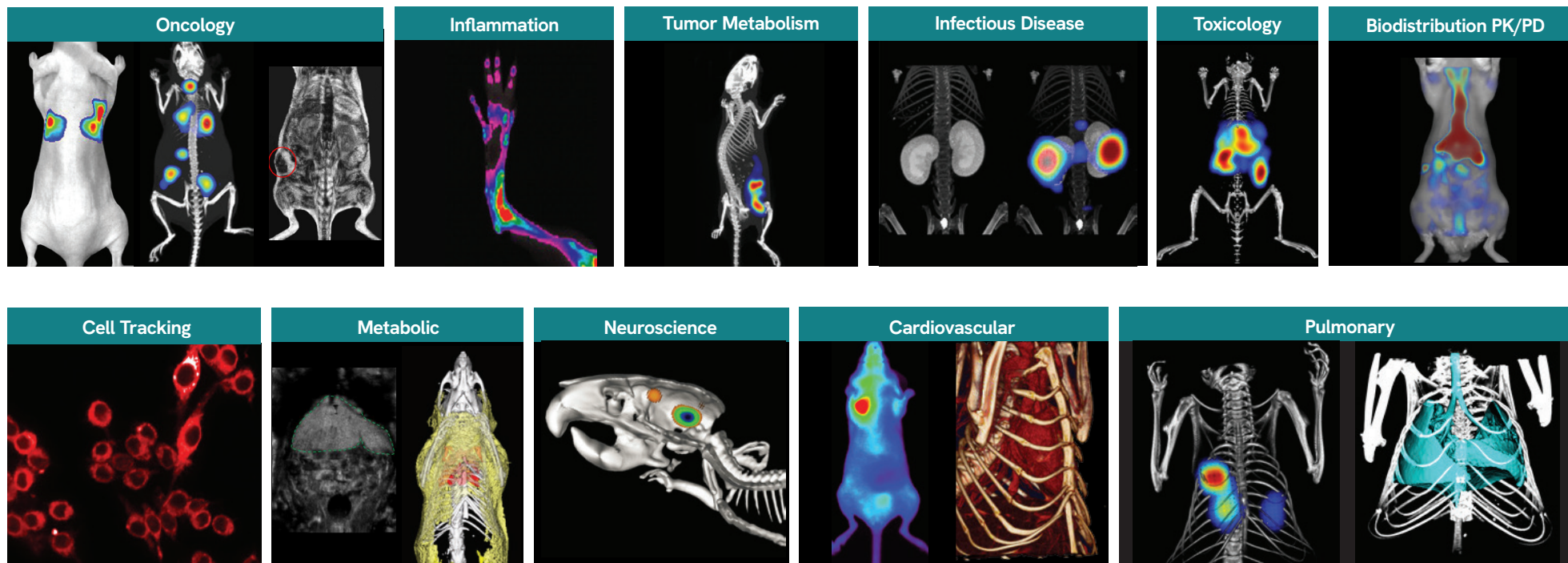
* Select products available in sample sizes. Contact your sales representative for details.

In vivo imaging instruments

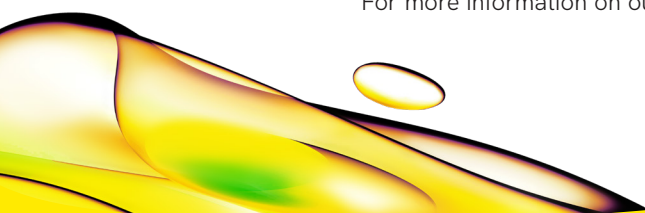
Optical		MicroCT		Ultrasound
2D	2D and 3D	3D	3D	3D
 <p>IVIS® Lumina LT Entry level BLI and FLI</p>	 <p>IVIS Lumina S5 High-throughput BLI and FLI</p>	 <p>IVIS Spectrum 2 2D/3D BLI and FLI</p>	 <p>Quantum GX3 High-resolution, low-dose microCT</p>	 <p>Vega® Automated, hands-free, high-throughput ultrasound system</p>
 <p>IVIS Lumina III BLI and FLI</p>	 <p>IVIS Lumina X5 High-throughput BLI and FLI with integrated x-ray</p>	 <p>IVIS SpectrumCT 2 2D/3D BLI and FLI with integrated microCT</p>		
 <p>IVIS Lumina III XRMS BLI and FLI with integrated x-ray</p>				

Comparison of IVIS optical imaging systems

	Lumina LT	Lumina III	Lumina XRMS	Lumina S5	Lumina X5	Spectrum 2	Spectrum CT 2
Animal capacity range	1-5	1-5	1-3	1-10	1-10	1-10	1-10
2D Bioluminescence	√	√	√	√	√	√	√
2D Fluorescence	√	√	√	√	√	√	√
Near infrared fluorescence	√	√	√	√	√	√	√
Spectral unmixing (CPS)	Upgrade	√	√	√	√	√	√
Modes of fluorescent excitation	epi-illumination	epi-illumination	epi-illumination	epi-illumination	epi-illumination	epi-illumination and trans-illumination	epi-illumination and trans-illumination
2D X-ray imaging			√		√		
2D High resolution x-ray imaging					√		
3D Bioluminescence						√	√
3D Fluorescence						√	√
microCT							√



For more information on our *in vivo* imaging solutions visit www.revvity.com



revvity